

providers' news

A publication for participating providers and their office staffs

inside

2011 spring provider workshops	3
admission pre-notification requirements for out-of-state or out-of-network	2
AHIN: member eligibility	7
AHIN: you see what we see	7
arkansas blue cross adopts RBRVS for 2011	5
claims check plus	5
coverage policy manual updates	12
diabetes self management training	4
fee schedule additions and updates	13
HIPAA: providers are encouraged to test HIPAA 5010 transactions early	5
injection code updates	22
injectable drug pricing for hosp outpatient depart	6
medicare prior authorization forms	5
Medi-Pak® Advantage: new disease management program offered to Medi-Pak® Advantage members	11
pharmacy: prescription drug benefit to change for individual health plan members	10
pharmacy: value formulary available to large groups beginning May 1, 2012	8
pharmacy: provider administered medications	10
quantitative evaluation of coronary calcium	4
sedation for routine gastrointestinal endoscopy	1

sedation for routine gastro-intestinal endoscopy

For patients without significant medical risks who are having routine endoscopic procedures (i.e. esophago-gastroduodenoscopy [EGD] or colonoscopy), adequate and safe sedation can be achieved by using a combination of simple sedatives (benzodiazepines and opioids). In some situations that may include simple sigmoidoscopy or when there is a patient/physician preference, a patient may not require any sedation.

Because general anesthesia carries a higher risk than IV sedation, it is only recommended for GI procedures for patients shown to be at high-risk or with special barriers to routine sedation. More specialized anesthetics are usually unnecessary. For example, the *American Society for Gastrointestinal Endoscopy* * notes that “the routine use of propofol in average-risk patients cannot be endorsed”. Patients should be encouraged to discuss specific concerns with their doctor prior to any planned endoscopy.

*Guideline: Sedation and anesthesia in GI endoscopy (ASGE, 2008).

admission pre-notification requirements for out-of-state or out-of-network

All out-of-state and out-of-network hospital admissions require pre-notification by calling the 800 number located on the member's ID card. In-network and in-state hospital admissions do not require pre-

notification. Please be aware when calling to pre-notify an out-of-state or out-of-network admission that the phone menu has changed. Providers must listen to the entire menu to assure calls are being transferred to

the appropriate location.

For more information, please call your local Arkansas Blue Cross and Blue Shield office.

Admission Pre-notification/Pre-certification Requirements for 2011	
Arkansas Blue Cross Blue Shield	Pre-notification requirements for out-of-network and out-of-state only. Effective Jan. 1, 2011, pre-notification calls are taken by Arkansas Blue Cross Customer Service not Health Integrated. Call the phone number on the member's ID card, listen to the menu of options, and choose the Arkansas Blue Cross option after the tone.
BlueAdvantage Administrators of Arkansas	Precertification and Continued Stay Review are required for many groups. Review, carefully, the member's ID card for pre-certification or pre-notification instructions and the appropriate 800 number to call.
FEP	There have been no changes in this process. Pre-certification is required for hospital admissions. Pre-certification services are provided by Health Integrated. Call the phone number on the member's ID card, listen to the menu of options, and choose the FEP option after the tone.
Health Advantage	Pre-notification required for out-of-network and out-of-state only. Effective Jan. 1, 2011, calls are taken by Health Advantage Customer Service not Health Integrated. Call the phone number on the member ID card, listen to the menu of options, and choose the Health Advantage option after the tone. For Arkansas State and Public School members (ID prefix PXG), pre-certification for inpatient rehabilitation and skilled nursing facilities is administered by American Health Holding. Inpatient mental health/substance abuse admissions are administered by LifeSynch. Acute medical conditions do not require pre-certification.
USable Administrators	Precertification and Continued Stay Review are required for many groups. Review, carefully, the member's ID card for pre-certification or pre-notification instructions and the appropriate 800 number to call.
USable Life Group Health	Pre-notification required for out-of-network and out-of-state only. Calls are taken by the regional Customer Service not Health Integrated. Providers should dial the Customer Service phone number located on the back of the member's ID card which directs callers to the appropriate regional Customer Service area. Callers should listen to the menu of options, and choose the USable Life Group Health option after the tone.

Definitions:

Pre-notification – Notification of the hospital admission only. There is no medical necessity review or continued stay review required. This notification is primarily for case management referral. Notification could occur after the member is admitted to the hospital. There is no penalty if the call is not

made. There are no denials associated with a pre-note.

Pre-certification and Continue Stay Review (CSR) – Notification of the admission as well as medical necessity review for the appropriateness of the admission. The call should be prior to the admission.

Continued stay review is medical necessity review of days in the hospital. All Pre-certification and CSR calls are done by Health Integrated. There are penalties associated with failure to make precertification/CSR calls.

2011 spring provider workshops

Providers interested in attending one of the workshops listed below should contact their Network Development Representative for registration instructions.

Central Region:

North Little Rock

Wyndham Hotel
Tuesday, May 10

Morning session:

Registration 8:00 – 8:30 a.m.
Workshop 8:30 – 11:30 a.m.

Afternoon session

Registration 12:30 – 1:00 p.m.
Workshop 1:00 – 4:00 p.m.

Northeast Region:

Jonesboro

St. Bernard’s Medical Center
Auditorium
Thursday, May 5

Morning session:

Registration 8:00 – 8:30 a.m.
Workshop 8:30 – 11:30 a.m.

Afternoon session:

Registration 12:30 – 1:00 p.m.
Workshop 1:00 – 4:00 p.m.

Northwest Region:

Mountain Home

Baxter Regional Medical Center
Lagerborg Conf Room
Thursday, April 14
Registration 8:00 – 8:30 a.m.
Workshop 8:30– 11:30 a.m.

Northwest Region:

Springdale

Jones Center for Families
Rooms 227-228
Tuesday, April 12
Registration 1:00 – 1:30 p.m.
Workshop 1:30 - 4:30 p.m.

South Central Region:

Hot Springs

National Park Community College
Martin Eisele Auditorium
Wednesday, April 27
Registration 12:30 – 1:00 p.m.
Workshop 1:00 – 4:00 p.m.

Southeast Region:

Pine Bluff

Harbor Oaks
Tuesday, April 26
Registration 8:30 – 9:00 a.m.
Workshop 9:00 a.m. – Noon

Southwest Region:

Texarkana

Christus St. Michael Medical Center
North Conference room
Tuesday, May 17
Registration 1:00 – 1:30 p.m.
Workshop 1:30 - 4:30 p.m.

West Central Region:

Fort Smith

St. Edward Mercy Medical Center
Hennessey Room
Friday, May 13
Registration 8:30 – 9:00 a.m.
Workshop 9:00 a.m. – Noon

If you have questions regarding a workshop in your area, contact your Network Development Representative.

diabetes self management training

Arkansas Blue Cross and Blue Shield, Health Advantage, and BlueAdvantage Administrators of Arkansas self-funded employer groups have covered Diabetes Self Management Training (DSMT) for quite some time. Per Arkansas Law ACA 23-79-601, the coverage is for one DSMT program. Additional programs may be covered if a member's symptoms or conditions change significantly.

When billing for a DSMT program, providers should bill using HCPCS codes G0108 or G0109. All outpatient hospital UB04 claims for DSMT should be submitted with revenue code 942 but also must include HCPCS codes G0108 or G0109. Revenue code 942 always require an HCPCS/CPT code on an outpatient claim; otherwise the claim will be rejected. DSMT services from professional providers

should be billed on a CMS 1500 claim form but must also include HCPCS code G0108 or G0109.

Eligible programs for Diabetes Self Management training must meet the following standards listed below. These guidelines follow the requirements of Arkansas Law ACA 23-79-601 (also known as Rule 70).

1. Compliance: The program must be in compliance with the National Standards for Diabetes Self-Management Education Program developed by the American Diabetes Association. These may be found at http://professional.diabetes.org/erp_list.aspx.
2. Required elements: Elements required to meet minimum standards are:
 - a. Needs assessment
 - b. Education plan
 - c. Education intervention
 - d. Evaluation of learner outcomes
 - e. Plan for follow-up for continuing learning needs
 - f. Documentation
3. Certification: To qualify for benefits, the provider must provide certification that the insured individual has successfully completed the diabetes self-management training.



quantitative evaluation of coronary calcium

CPT code S8092 (Electron beam computed tomography — also known as ultrafast CT, cine CT) is the appropriate procedure code to use for screening and is not covered. CPT code 75571 (Computed tomography, heart, without

contrast material, with quantitative evaluation of coronary calcium) is the appropriate procedure code to use when the study is done prior to CT coronary angiography to determine if there is too much calcium to do CTA.

The CPT Code 75571 is only paid when it is the only service in the 75571-75574 range provided on the date of service. If the CTA can be completed, then CPT Code 75571 is not covered.

providers are encouraged to test HIPAA 5010 transactions early

We now are only nine months from the compliance date for HIPAA-mandated format changes in electronic health care transactions standards. As of January 1, 2012 only the X12 5010 versions of medical transactions, the NCPDP D.0 version of Pharmacy and supplier transitions, and the NCPDP 3.0 version of Medicaid pharmacy subrogation transactions will be HIPAA compliant.

The Department of Health and Human Services (HHS) adopted specific changes and corrections in

most of the X12 5010 versions of the medical transactions standards, frequently referred to as the errata versions. These errata changes are part of the mandate which will be implemented January 1, 2012. Arkansas Blue Cross and Blue Shield already has incorporated errata changes into our 5010 system changes. All test transactions submitted to Arkansas Blue Cross in preparation for the new mandate must include the adopted errata changes.

Arkansas Blue Cross strongly

encourages all providers to test their systems as early as possible to ensure that their system is migrated over to the new format prior to the HIPAA compliance date (January 1, 2012). Arkansas Blue Cross will begin migrating our trading partners that have completed 5010 testing over to that format in production as early as July 1, 2011.

To begin testing, please contact EDI Services at 501-378-2419 or 866-582-3247 for further instructions.

medicare prior authorization forms

Arkansas Blue Cross and Blue Shield's Medicare prescription drug plans have a specific set of prior authorization criteria for each formulary. The lists of all categories and criteria are available online along with individual drug forms at arkansasbluecross.com/providers/forms.aspx. Please use these to ensure a timely prior authorization process for all Medicare members. For more information about criteria and forms, please call the CVS Caremark Prior Authorizations Department at 1-800-294-5979.

arkansas blue cross adopts RBRVS for 2011

Effective July 1, 2011, Arkansas Blue Cross and Blue Shield will, for most services, adopt the 2011 Resource Based Relative Value System (RBRVS) Relative Value Units (RVUs) which were published in the January 11, 2011 Federal Register. A new Arkansas Blue Cross and Blue Shield fee schedule using the 2011 RBRVS will be available on the Advanced Health Information Network (AHIN) website bulletin board beginning April 1, 2011.

claims check plus

The Claims Check Plus claims auditing software was implemented in March 2011 for Arkansas Blue Cross and Blue Shield and Health Advantage. Claims Check Plus uses CPT coding criteria and protocol when checking billing information submitted on claims. For more information on Claims Check Plus, see page 6 in the September 2010 edition of *Providers' News* found at www.arkansasbluecross.com in the Provider section.

Note: BlueAdvantage Administrators of Arkansas will be implementing Claims Check Plus in April 2011.

injectable drug pricing for hospital outpatient departments

An article was published in the September 2004 issue of *Provider's News* stating that administration fees for IV infusions, etc., would not be covered for facilities. The article specifically mentioned revenue codes 940 and 949.

It has come to the attention of Arkansas Blue Cross and Blue Shield that this denial has not been applied consistently. In an effort to control costs and to be fair to our providers, Arkansas Blue Cross will begin paying a nominal fee for these services.

Since the reimbursement for the facility practice expense is covered under other revenue codes when provided in the outpatient hospital setting, the reimbursement

for the practice expense portion of these services has been removed from the fee schedule amount used for physicians.

Additionally, Arkansas Blue Cross will begin paying hospitals for injectable drugs (J0000-J9999, etc.) based on the Arkansas Blue Cross fee schedule which was developed to reimburse the cost of the medication. Some of the sources of the reimbursement amounts are Average Sales Price (ASP) plus 10% (with a 10% maximum of \$400), wholesale acquisition cost (WAC), 85% of average wholesale price (AWP), or invoice from the provider.

The fee schedule amounts will be the same as the amounts used to reimburse physicians and will be

paid at 100% of the Arkansas Blue Cross fee schedule amount. Unlisted J codes will be listed as BR (By Report) and will be reimbursed using one of the sources noted for the drug and dosage provided.

Anytime a valid HCPCS or CPT code is available for the drug given, the HCPCS/CPT code is required to be billed with the appropriate revenue code.

The following pricing changes will be effective July 1, 2011. "BR" on the fee schedule means "By Report" which means these codes will be given individual consideration and paid at a reasonable amount without including the practice expense.

Procedure	Allowance
96360	\$11.44
96361	\$5.79
96365	\$13.81
96366	\$11.12
96367	\$11.72
96368	\$10.53
96369	\$13.81
96370	\$11.12
96371	\$0.45
96372	\$10.53
96373	\$10.53
96374	\$12.03

Procedure	Allowance
96375	\$6.38
96376	BR
96379	BR
96401	\$14.26
96402	\$11.72
96405	\$32.18
96406	\$49.24
96409	\$16.49
96411	\$13.22
96413	\$18.86
96415	\$11.72
96416	\$15.62

Procedure	Allowance
96417	\$13.81
96420	\$13.70
96422	\$13.70
96423	\$11.89
96425	\$14.61
96440	\$164.96
96446	\$25.10
96450	\$95.68
96521	\$14.71
96522	\$14.71
96523	\$2.82
96542	\$46.27

AHIN

member eligibility

When a provider is looking in AHIN at a member's eligibility, AHIN will only show the most recently updated date span. When a provider is needing information that may be on a claim from a past date or older eligibility information, the provider can click on the "Insurance History for this Member" link to show all previous member eligibility date spans. Providers can also select the "Insurance Type" link to determine whether or not the member needs a referral.

you see what we see

Anytime providers need to check an Arkansas Blue Cross and Blue Shield, BlueAdvantage Administrators of Arkansas, BlueCard, or Health Advantage patient's eligibility or benefit information, please use the Advanced Health Information Network (AHIN) and MyBlueLine Interactive Voice Response (IVR) system.

Many providers access the easy-to-use, self-service tools and then call provider and customer service representatives to "double check" even simple member information like membership effective dates, deductibles, copayments and coinsurance. Our self-service tools are available through the AHIN and MyBlueLine IVR system to assist providers in delivering quality care to our members. Arkansas Blue Cross ask that providers use our electronic and telephonic self-service tools to obtain patient eligibility and benefit (E&B) and claim status information.

By using our self-service tools, providers can simplify administrative activities, eliminate unnecessary paperwork and save time. The secure web-based tools are Health Insurance Portability Accountability Act-Administrative Simplification

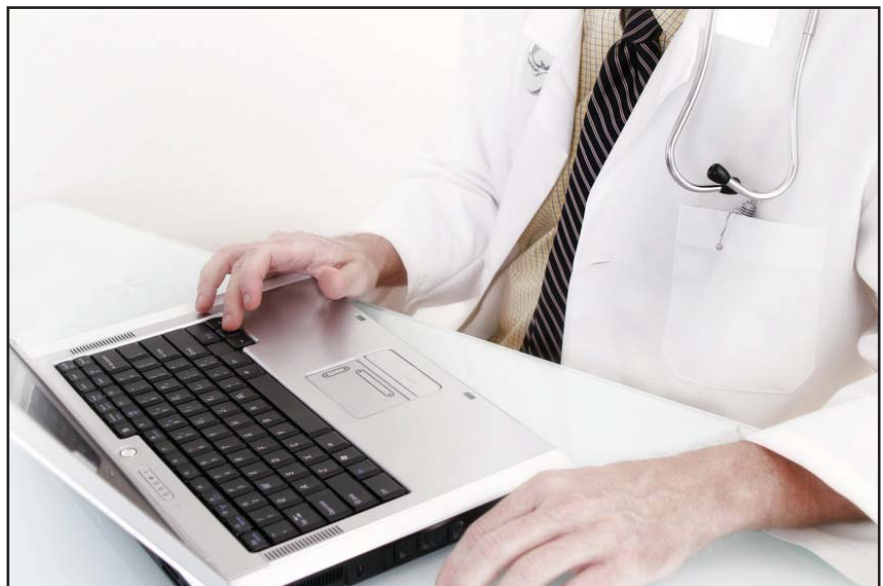
(HIPAA-AS) compliant and available 24 hours a day. There is no fee associated with using the Arkansas Health Information Network.

To access AHIN, go to the Arkansas Blue Cross Web site, arkbluecross.com, select the "Providers" tab at the top and then select the "AHIN" link. AHIN access is free of charge and easy to use.

For more information on setting up a front office staff or admissions staff to have this easy access to AHIN, please call 501-378-2336. If needed, an AHIN account can be set up to limit access only to eligibility and benefit information.

Providers also may call MyBlueLine to check a patient's eligibility and benefits. MyBlueLine is available 24/7 by calling 1-800-827-4814. Use a natural, conversational voice to ask for patient-specific information, like eligibility and benefits, claims status and addresses.

AHIN and My BlueLine are easy to use and frees up our provider and customer service staff to answer more complicated inquiries. Remember, on our self-service tools, you see what we see.



Pharmacy

value formulary available to large groups beginning May 1, 2011

Beginning May 1, 2011, the Value Formulary will be offered as a drug plan choice for both fully insured and self-funded large groups that have health insurance coverage through Arkansas Blue Cross and Blue Shield or Health Advantage, or third-party administrative services through BlueAdvantage Administrators of Arkansas.

The Value Formulary is a low-cost formulary alternative that emphasizes the use of generic medications. The coverage list is focused on generics as the first line of prescribing. It also includes select brands in specific therapeutic classes. The Value Formulary utilizes four drug tiers and incorporates step therapy.

Physicians who have patients in employer groups that select the Value Formulary at their health plan renewal date, may need to work with their patients (employees/health plan members) to adjust pre-

scriptions or walk them through the step therapy process.

Step therapy is a process for helping members who need to treat a medical condition with prescription medication follow a course of action, first using a generic drug in an effort to treat the condition as effectively as with brand-name or higher-cost medication.

The four Value Formulary drug tiers are:

- Tier 1 — Includes all covered generics.
- Tier 2 — Includes a limited number of brand-name products in the preferred brand copayment. These are included to augment the generics available.
- Tier 3 — Includes all other single-source brands covered at the non-preferred brand copayment.
- Tier 4 — Includes all drugs otherwise considered non-covered.

In Tier 4, members will pay 100 percent of the copayment, but will benefit from the network discount available through the drug card. Multisource brand products are those that have a generic equivalent and will be listed on Tier 4. Specialty drugs may be covered based on the plan's design.

With the Value Formulary, in selected classes, it is necessary for a member to try a generic drug before a brand-name drug is covered. The Value Formulary is evaluated periodically to consider new brand products and recently launched generics.

A list of medications and an explanation of the step therapy requirement is located on the following page. The drug list is not inclusive, nor does it guarantee coverage, but it represents a summary of prescription coverage. Listed products are for informational purposes only and are not intended to replace the clinical judgment of the prescriber.

Step therapy / No plan coverage

Step therapy ensures that members use clinically appropriate drugs in a cost-effective manner. Step therapy protocols are based on current medical findings, U.S. Food and Drug Administration (FDA) approved drug labeling and drug costs.

No plan coverage of a class of drugs is used as a management



value formulary available to large groups beginning May 1 (continued from page 8)

tool when over-the-counter (OTC) options are available. OTC products typically are less expensive than prescription products. Prescription products will be on Tier 4.

As you know, generic drugs are

commonly prescribed, safe and effective for treating a given condition, and are typically less expensive than brand-name drugs.

Select brand-name drugs are not covered unless a plan partici-

pant tries and has complications using a generic alternative. Drug classes that are subject to step therapy and no plan coverage in the Value Formulary are in the table below.

Therapeutic Class	Description
Blood Pressure Medications (ACE-Inhibitors/ARBs)	Step Therapy. Step through generic ACE-Inhibitor before ARBs or Tekturna. Step through generic ACE-Inhibitor/diuretic combination before ARB/diuretic or Tekturna/diuretic combinations.
Cholesterol Medications (Statins)	Step Therapy. Step through generic statin before single-source brands and single-source brand combination products.
NSAIDs	Step Therapy. Step through one generic NSAID before Celebrex; however, Celebrex is allowed if Plavix, warfarin or oral corticosteroid is in current drug profile.
Osteoporosis	Step Therapy. Step through generic bisphosphonate before single-source brand products.
Antidepressants (SSRI, SNRI)	Step Therapy. Step through generic SSRI or SNRI before single-source brands.
Proton Pump Inhibitors (PPIs)	No Plan Coverage. All prescription products are on Tier 4. OTC options are available.
Antihistamines	No Plan Coverage. All prescription products are on Tier 4. OTC options are available.
Anti-Migraine Medications (Triptans)	Step Therapy. Step through generic triptan before a brand product is covered.
Nasal Steroids	Step Therapy. Step through generic nasal steroid before a brand product is covered.
Sedative-Hypnotics, Nonbenzodiazepine	Step Therapy. Step through generic product before a brand product is covered.

Although the words “Value Formulary” will not be printed on a member’s health plan ID card, it will be indicated on the “Rx” line with three tier copayment dollar amounts and a “100%” designation as the fourth tier (which indicates that the member is responsible for 100 percent of the cost, but can take advantage of discounts on drugs in that tier).

All fully insured groups selecting the Value Formulary will have standard benefits as outlined above. Self-funded groups do have some flexibility in benefit design for step therapy and/or non-covered classes of drugs.

If you have a patient covered by one of our health plans that has tried step therapy unsuccessfully in the past, you must notify the health plan.

At Arkansas Blue Cross, we understand you are responsible for your patients’ care plan and we want to work with you to make any adjustments easy on your patients whose employers choose Value Formulary. If you have questions about the Value Formulary, please contact our Pharmacy Division at 501-378-3392.

Pharmacy

prescription drug benefit to change for individual health plan members

To better meet the needs of our members, effective May 1, 2011, Arkansas Blue Cross and Blue Shield will change its drug benefit for the new Comprehensive Blue PPO III individual health plan. The plan will continue to utilize the Value Formulary; however, the benefit for brand-name drugs will change:

- Tier 1: Generics — the \$10 copayment for generic medications will stay the same
- Tier 2: Preferred brand-name prescription drugs — \$35 copayment will apply
- Tier 3: Non-preferred brand-name drugs — \$70 copayment will apply

The \$500 deductible and 20 percent coinsurance (or \$250

copayment; whichever is less) per prescription will no longer apply.

For Tier 4, drugs not covered under the plan, members will pay 100 percent of the cost, but will benefit from the network discount available through the drug card.

Step therapy also will apply for Comprehensive Blue PPO III members. (See “Value Formulary for large groups” article in this issue of *Providers’ News* for more information about medications subject to step therapy and no plan coverage as it is the same for Comp Blue PPO III members.) Physicians will need to work with members to adjust prescriptions appropriately.

Comprehensive Blue PPO III members will be notified of the change in April 2011. Members

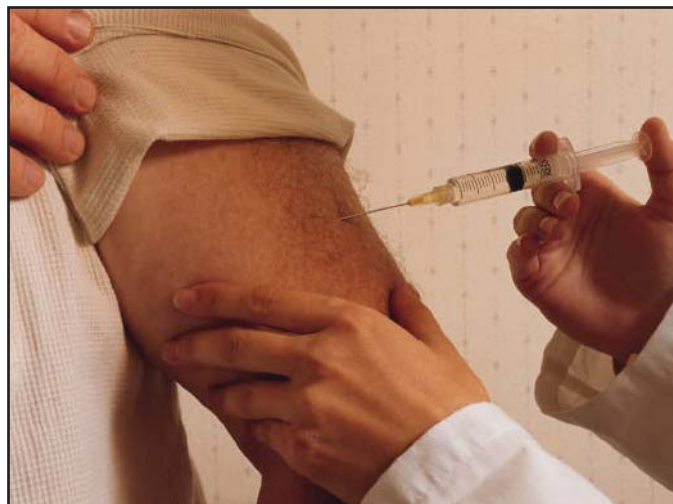
will receive an amendment to their benefit certificate that reflects the change. The change will also be reflected in their Schedule of Benefits although it will not be shown on their member ID card. Arkansas Blue Cross will work with members to reconcile any effect the change in benefit will have on expenses they already encountered in 2011.

The change in benefit applies only to the Comprehensive Blue PPO III members. The new prescription drug benefit is designed to lower members’ out-of-pocket costs.

If you have questions about the changes in drug benefit for Comp Blue PPO III, please call 1-800-863-5561.

provider administered medications

Please note that medications paid through the pharmacy benefit are intended to be self-administered while provider administered medications are filed under the medical benefit. Arkansas Blue Cross and Blue Shield recently had claims paying in error on the pharmacy card for provider-administered medications. Specifically, many members were using the pharmacy card for testosterone injections. This processing error was corrected as of January 1, 2011. Please note that members cannot use their pharmacy benefit to obtain the medication. However, the provider or the member can file a medical claim for reimbursement in accordance with their benefits.



Medi-Pak[®] Advantage

new disease management program offered to Medi-Pak[®] Advantage members

Beginning in April 2011, Arkansas Blue Cross and Blue Shield's Medi-Pak[®] Advantage (PFFS) members will have access to a new disease management program — at no additional cost — to help them manage certain chronic conditions.

This member program is for individuals with chronic conditions including diabetes, asthma, chronic obstructive pulmonary disease (COPD), heart failure, or coronary artery disease (CAD), and is designed to support physicians by offering patient education and outreach.

We at Arkansas Blue Cross respect the physician's role as leader of the care team and recognize that in today's health care environment, most practitioners and their staff are stretched to the limit. This program is structured to support the physicians' busy practices by providing helpful patient follow-up and education as an adjunct to their care.

The new disease management program will provide updates that may assist the physicians in improving patient outcomes. The program may benefit physicians and their patients by:

- encouraging patients who have a chronic illness to obtain ongoing primary care in addition to necessary specialty care.
- supporting patients in adhering to their treatment plan.
- engaging and empowering patients to take an active role in their own health.

To help patients, disease management professionals (registered nurses, social workers and certified pedorthists) are available to:

- Assist patients with medication education and care plan adherence.

- Address gaps in patient's knowledge about their disease.
- Provide reminders and assistance with scheduling tests and appointments.
- Identify patients in need of testing and other supplies.
- Provide social work and other referrals as part of a coordinated plan of care.
- Offer support for discussion between patients and their physicians.
- Provide general health and disease-specific educational mailings.



These services will be delivered both telephonically and at in-market clinics, which will be located throughout the state where we have high membership concentrations. In addition, some of our members will be participating in the remote tele-monitoring program.

Ongoing communication

Medi-Pak[®] Advantage (PFFS) members will receive an invitation from

Arkansas Blue Cross to participate in the program. The program is completely voluntary for the member. When a member joins the program, Arkansas Blue Cross will notify the member's physician.

Arkansas Blue Cross will then keep physicians in the loop with current information on the health status of their patients, sending information by phone, fax and/or mail. Arkansas Blue Cross is committed to supporting patients' adherence to their doctors' treatment plan.

Arkansas Blue Cross has hired MedAssurant, Inc., a nationally respected care management service provider, to deliver this beneficial member program. MedAssurant, Inc.'s programs have earned full Patient and Practitioner Oriented Disease Management Accreditation from the National Committee for Quality Assurance (NCQA).

All physicians in the Medi-Pak[®] Advantage (PFFS) network who have patients eligible for these programs will be receiving more information about this new disease management program by mail. In addition, physicians will receive personal contact from the MedAssurant staff about setting up collaborative reporting.

Arkansas Blue Cross is excited about this new program, which can help our chronically ill Medi-Pak[®] Advantage (PFFS) members have a better quality of life by better managing their illness. We hope our physicians find it to be a helpful support for their patient care plan.

Arkansas Blue Cross appreciates your care of our Medi-Pak[®] Advantage (PFFS) members.

coverage policy manual updates

The following policies were added or updated in Arkansas Blue Cross and Blue Shield's Coverage Policy Manual since December 2010. To view entire policies, access the coverage policies located on the Arkansas Blue Cross Web site at arkansas-bluecross.com.

New Policies:

Policy ID	Policy Name
1997054	Bone Mineral Density Study
2001028	Magnetic Resonance Imaging, Breast
2002029	Implantable Bone Conduction Hearing Aids
2003061	Brachytherapy, Radioembolization of Primary & Metastatic Tumors of the Liver with Therapeutic Microspheres
2005010	Computed Tomography, Cardiac and Coronary Artery
2008006	Transcatheter Arterial Chemoembolization (TACE) to Treat Primary or Metastatic Liver Malignancies
2009028	Biofeedback as a Treatment of Fecal Incontinence or Constipation
2009036	Intensity Modulated Radiation Therapy (IMRT)_Breast
2010034	Implantable Telescope for the Treatment of Age-Related Macular Degeneration
2010035	Lyme Disease, Intravenous Antibiotic Therapy and Associated Diagnostic Testing
2010041	Cardiac Hemodynamic Monitoring for the Management of Heart Failure in the Outpatient Setting
2010042	Endobronchial Valves
2010043	Electrocardiogram, Computerized 2-Lead Analysis for the Diagnosis of Coronary Artery Disease
2010044	HDC & Autologous Stem &/or Progenitor Cell Support-Chronic Myelogenous Leukemia
2010045	Genetic Test: Colon Cancer, BRAF Mutation Analysis to Determine Sensitivity to Chemotherapy
2010046	Intravitreal Implant, Dexamethasone (Ozurdex)
2010047	Functional Intracellular Analysis
2011001	Genetic Testing: Cardiovascular Disease, KIF6 Genotyping to Determine Risk and Statin Therapy Effectiveness
2011002	Positron Emission Mammography (PEM)
2011003	Chemodenervation, Botulinum Toxin for the Treatment of Chronic Migraine Headache

Fee Schedule

fee schedule additions and updates

The following CPT and HCPCS codes were updated on the Arkansas Blue Cross and Blue Shield fee schedule.

CPT / HCPCS Code	Total / Purchase	Professional / Rental	Technical / Used	Total SOS / Purchase	Prof SOS / Rental	Tech SOS / Used
77080	\$160.06	\$17.78	\$142.27	\$0.00	\$17.78	\$0.00
93567	\$215.59	\$0.00	\$0.00	\$80.07	\$80.07	\$0.00
94660	\$78.22	\$55.82	\$0.00	\$55.82	\$55.82	\$0.00
95991	\$152.94	\$61.06	\$0.00	\$61.06	\$61.06	\$0.00
0228T	\$335.49	\$0.00	\$0.00	\$179.89	\$0.00	\$0.00
0229T	\$181.37	\$0.00	\$0.00	\$121.37	\$0.00	\$0.00
0230T	\$318.15	\$0.00	\$0.00	\$154.95	\$0.00	\$0.00
0231T	\$170.18	\$0.00	\$0.00	\$100.98	\$0.00	\$0.00
A4356	\$47.86	\$0.00	\$0.00	\$0.00	\$0.00	\$0.00
A6208	\$41.24	\$0.00	\$0.00	\$0.00	\$0.00	\$0.00
G0275	\$0.00	\$22.53	\$0.00	\$22.53	\$22.53	\$0.00
G0278	\$0.00	\$22.53	\$0.00	\$22.53	\$22.53	\$0.00
J3262	\$3.32	\$0.00	\$0.00	\$0.00	\$0.00	\$0.00
S3820	\$3,006.00	\$210.42	\$2,795.58	\$0.00	\$0.00	\$0.00
S3822	\$427.50	\$29.93	\$397.57	\$0.00	\$0.00	\$0.00
S3823	\$517.50	\$36.23	\$481.27	\$0.00	\$0.00	\$0.00

The following CPT and HCPCS codes were added to the Arkansas Blue Cross and Blue Shield fee schedule.

CPT / HCPCS Code	Total / Purchase	Professional / Rental	Technical / Used	Total SOS / Purchase	Prof SOS / Rental	Tech SOS / Used
11045	\$48.22	\$0.00	\$0.00	\$29.14	\$0.00	\$0.00
11046	\$85.38	\$0.00	\$0.00	\$62.29	\$0.00	\$0.00
11047	\$140.47	\$0.00	\$0.00	\$107.84	\$0.00	\$0.00
22551	\$0.00	\$0.00	\$0.00	\$2,747.71	\$0.00	\$0.00
22552	\$0.00	\$0.00	\$0.00	\$646.23	\$0.00	\$0.00
29914	\$0.00	\$0.00	\$0.00	\$1,638.66	\$0.00	\$0.00
29915	\$0.00	\$0.00	\$0.00	\$1,670.00	\$0.00	\$0.00
29916	\$0.00	\$0.00	\$0.00	\$1,670.00	\$0.00	\$0.00
31295	BR	\$0.00	\$0.00	\$281.75	\$0.00	\$0.00
31296	BR	\$0.00	\$0.00	\$337.35	\$0.00	\$0.00
31297	BR	\$0.00	\$0.00	\$275.75	\$0.00	\$0.00
31634	\$1,950.69	\$0.00	\$0.00	\$312.58	\$0.00	\$0.00

fee schedule additions (continued from page 13)

CPT / HCPCS Code	Total / Purchase	Professional / Rental	Technical / Used	Total SOS / Purchase	Prof SOS / Rental	Tech SOS / Used
33620	\$0.00	\$0.00	\$0.00	\$2,780.04	\$0.00	\$0.00
33621	\$0.00	\$0.00	\$0.00	\$1,495.29	\$0.00	\$0.00
33622	\$0.00	\$0.00	\$0.00	\$5,867.60	\$0.00	\$0.00
37220	BR	\$0.00	\$0.00	\$661.15	\$0.00	\$0.00
37221	BR	\$0.00	\$0.00	\$805.39	\$0.00	\$0.00
37222	BR	\$0.00	\$0.00	\$300.78	\$0.00	\$0.00
37223	BR	\$0.00	\$0.00	\$341.69	\$0.00	\$0.00
37224	BR	\$0.00	\$0.00	\$728.40	\$0.00	\$0.00
37225	BR	\$0.00	\$0.00	\$978.77	\$0.00	\$0.00
37226	BR	\$0.00	\$0.00	\$814.49	\$0.00	\$0.00
37227	BR	\$0.00	\$0.00	\$1,182.37	\$0.00	\$0.00
37228	BR	\$0.00	\$0.00	\$890.45	\$0.00	\$0.00
37229	BR	\$0.00	\$0.00	\$1,146.39	\$0.00	\$0.00
37230	BR	\$0.00	\$0.00	\$1,109.96	\$0.00	\$0.00
37231	BR	\$0.00	\$0.00	\$1,206.40	\$0.00	\$0.00
37232	BR	\$0.00	\$0.00	\$322.09	\$0.00	\$0.00
37233	BR	\$0.00	\$0.00	\$528.73	\$0.00	\$0.00
37234	BR	\$0.00	\$0.00	\$442.31	\$0.00	\$0.00
37235	BR	\$0.00	\$0.00	\$627.53	\$0.00	\$0.00
38900	\$222.53	\$0.00	\$0.00	\$222.53	\$0.00	\$0.00
43283	\$0.00	\$0.00	\$0.00	\$265.82	\$0.00	\$0.00
43327	\$0.00	\$0.00	\$0.00	\$1,324.95	\$0.00	\$0.00
43328	\$0.00	\$0.00	\$0.00	\$1,942.83	\$0.00	\$0.00
43332	\$0.00	\$0.00	\$0.00	\$1,900.76	\$0.00	\$0.00
43333	\$0.00	\$0.00	\$0.00	\$2,065.14	\$0.00	\$0.00
43334	\$0.00	\$0.00	\$0.00	\$2,090.67	\$0.00	\$0.00
43335	\$0.00	\$0.00	\$0.00	\$2,253.63	\$0.00	\$0.00
43336	\$0.00	\$0.00	\$0.00	\$2,463.58	\$0.00	\$0.00
43337	\$0.00	\$0.00	\$0.00	\$2,685.36	\$0.00	\$0.00
43338	\$0.00	\$0.00	\$0.00	\$218.09	\$0.00	\$0.00
43753	\$0.00	\$0.00	\$0.00	\$34.51	\$0.00	\$0.00
43754	\$120.78	\$0.00	\$0.00	\$50.51	\$0.00	\$0.00
43755	\$186.21	\$0.00	\$0.00	\$93.35	\$0.00	\$0.00
43756	\$329.92	\$0.00	\$0.00	\$83.47	\$0.00	\$0.00
43757	\$427.04	\$0.00	\$0.00	\$121.85	\$0.00	\$0.00

CPT / HCPCS Code	Total / Purchase	Professional / Rental	Technical / Used	Total SOS / Purchase	Prof SOS / Rental	Tech SOS / Used
49327	\$0.00	\$0.00	\$0.00	\$214.24	\$0.00	\$0.00
49412	\$0.00	\$0.00	\$0.00	\$133.64	\$0.00	\$0.00
49418	\$2,285.93	\$0.00	\$0.00	\$380.54	\$0.00	\$0.00
53860	\$2,198.53	\$0.00	\$0.00	\$377.46	\$0.00	\$0.00
57156	\$238.81	\$0.00	\$0.00	\$168.53	\$0.00	\$0.00
61781	\$0.00	\$0.00	\$0.00	\$384.28	\$0.00	\$0.00
61782	\$0.00	\$0.00	\$0.00	\$317.34	\$0.00	\$0.00
61783	\$0.00	\$0.00	\$0.00	\$336.26	\$0.00	\$0.00
64566	\$196.87	\$0.00	\$0.00	\$49.30	\$0.00	\$0.00
64568	\$0.00	\$0.00	\$0.00	\$1,023.27	\$0.00	\$0.00
64569	\$0.00	\$0.00	\$0.00	\$1,015.46	\$0.00	\$0.00
64570	\$0.00	\$0.00	\$0.00	\$885.55	\$0.00	\$0.00
64611	\$156.04	\$0.00	\$0.00	\$141.48	\$0.00	\$0.00
65778	\$1,870.86	\$0.00	\$0.00	\$120.56	\$0.00	\$0.00
65779	\$1,714.98	\$0.00	\$0.00	\$462.12	\$0.00	\$0.00
66174	\$0.00	\$0.00	\$0.00	\$1,555.53	\$0.00	\$0.00
66175	\$0.00	\$0.00	\$0.00	\$1,739.66	\$0.00	\$0.00
74176	\$265.45	\$140.14	\$135.38	\$0.00	\$140.14	\$0.00
74177	\$394.03	\$146.89	\$257.84	\$0.00	\$146.89	\$0.00
74178	\$491.95	\$162.54	\$341.19	\$0.00	\$162.54	\$0.00
76881	\$175.69	\$47.76	\$127.93	\$0.00	\$47.76	\$0.00
76882	\$48.13	\$33.14	\$14.99	\$0.00	\$33.14	\$0.00
80104	BR	\$0.00	\$0.00	\$0.00	\$0.00	\$0.00
82930	\$7.89	\$0.55	\$7.34	\$0.00	\$0.55	\$0.00
83861	\$35.37	\$2.48	\$22.89	\$0.00	\$2.48	\$0.00
84112	\$90.64	\$6.35	\$84.29	\$0.00	\$6.35	\$0.00
85598	\$37.95	\$2.66	\$35.29	\$0.00	\$2.66	\$0.00
86481	\$87.22	\$6.11	\$81.12	\$0.00	\$6.11	\$0.00
86902	\$8.07	\$0.57	\$7.50	\$0.00	\$0.57	\$0.00
87501	\$72.22	\$5.06	\$67.16	\$0.00	\$5.06	\$0.00
87502	\$119.75	\$8.38	\$111.37	\$0.00	\$8.38	\$0.00
87503	\$43.83	\$3.07	\$40.76	\$0.00	\$3.07	\$0.00
87906	\$181.14	\$12.68	\$168.46	\$0.00	\$12.68	\$0.00
88120	\$686.70	\$88.01	\$598.69	\$0.00	\$88.01	\$0.00
88121	\$579.60	\$77.22	\$502.38	\$0.00	\$77.22	\$0.00
88177	\$44.84	\$35.37	\$9.47	\$0.00	\$35.37	\$0.00

fee schedule additions (continued from page 15)

CPT / HCPCS Code	Total / Purchase	Professional / Rental	Technical / Used	Total SOS / Purchase	Prof SOS / Rental	Tech SOS / Used
88363	\$59.38	\$0.00	\$0.00	\$28.26	\$0.00	\$0.00
88749	BR	\$0.00	\$0.00	\$0.00	\$0.00	\$0.00
90460	\$35.61	\$0.00	\$0.00	\$0.00	\$0.00	\$0.00
90461	\$18.36	\$0.00	\$0.00	\$0.00	\$0.00	\$0.00
91013	\$35.64	\$16.13	\$19.51	\$0.00	\$16.13	\$0.00
91117	\$230.09	\$0.00	\$0.00	\$244.14	\$0.00	\$0.00
92132	\$56.63	\$34.10	\$22.52	\$0.00	\$34.10	\$0.00
92133	\$70.04	\$47.51	\$22.52	\$0.00	\$47.51	\$0.00
92134	\$70.04	\$47.51	\$22.52	\$0.00	\$47.51	\$0.00
92227	\$17.19	\$0.00	\$17.19	\$0.00	\$0.00	\$0.00
92228	\$46.77	\$28.26	\$18.51	\$0.00	\$28.26	\$0.00
93451	\$240.27	\$240.27	\$0.00	\$240.27	\$240.27	\$0.00
93452	\$420.78	\$420.78	\$0.00	\$420.78	\$420.78	\$0.00
93453	\$552.19	\$552.19	\$0.00	\$552.19	\$552.19	\$0.00
93454	\$424.59	\$424.59	\$0.00	\$424.59	\$424.59	\$0.00
93455	\$489.72	\$489.72	\$0.00	\$489.72	\$489.72	\$0.00
93456	\$544.04	\$544.04	\$0.00	\$544.04	\$544.04	\$0.00
93457	\$609.01	\$609.01	\$0.00	\$609.01	\$609.01	\$0.00
93458	\$517.61	\$517.61	\$0.00	\$517.61	\$517.61	\$0.00
93459	\$583.17	\$583.17	\$0.00	\$583.17	\$583.17	\$0.00
93460	\$649.68	\$649.68	\$0.00	\$649.68	\$649.68	\$0.00
93461	\$716.55	\$716.55	\$0.00	\$716.55	\$716.55	\$0.00
93462	\$330.32	\$0.00	\$0.00	\$330.32	\$0.00	\$0.00
93463	\$175.24	\$0.00	\$0.00	\$175.24	\$0.00	\$0.00
93464	\$387.45	\$154.61	\$232.84		\$154.61	\$0.00
93563	\$92.25	\$0.00	\$0.00	\$92.25	\$0.00	\$0.00
93564	\$93.94	\$0.00	\$0.00	\$93.94	\$0.00	\$0.00
93565	\$71.54	\$0.00	\$0.00	\$71.54	\$0.00	\$0.00
93566	\$257.83	\$0.00	\$0.00	\$71.10	\$0.00	\$0.00
93567	\$215.59	\$0.00	\$0.00	\$80.07	\$0.00	\$0.00
93568	\$234.35	\$0.00	\$0.00	\$73.23	\$0.00	\$0.00
95800	\$211.98	\$105.28	\$106.70	\$0.00	\$105.28	\$0.00
95801	\$158.99	\$78.96	\$80.03	\$0.00	\$78.96	\$0.00
96446	\$191.16	\$0.00	\$0.00	\$31.58	\$0.00	\$0.00
99224	\$0.00	\$0.00	\$0.00	\$34.77	\$0.00	\$0.00

CPT / HCPCS Code	Total / Purchase	Professional / Rental	Technical / Used	Total SOS / Purchase	Prof SOS / Rental	Tech SOS / Used
99225	\$0.00	\$0.00	\$0.00	\$61.62	\$0.00	\$0.00
99226	\$0.00	\$0.00	\$0.00	\$92.22	\$0.00	\$0.00
0234T	\$0.00	\$0.00	\$0.00	\$0.00	\$0.00	\$0.00
0235T	\$0.00	\$0.00	\$0.00	\$0.00	\$0.00	\$0.00
0236T	\$0.00	\$0.00	\$0.00	\$0.00	\$0.00	\$0.00
0237T	\$0.00	\$0.00	\$0.00	\$0.00	\$0.00	\$0.00
0238T	\$0.00	\$0.00	\$0.00	\$0.00	\$0.00	\$0.00
0239T	\$0.00	\$0.00	\$0.00	\$0.00	\$0.00	\$0.00
0240T	\$0.00	\$0.00	\$0.00	\$0.00	\$0.00	\$0.00
0241T	\$0.00	\$0.00	\$0.00	\$0.00	\$0.00	\$0.00
0242T	\$0.00	\$0.00	\$0.00	\$0.00	\$0.00	\$0.00
0243T	\$0.00	\$0.00	\$0.00	\$0.00	\$0.00	\$0.00
0244T	\$0.00	\$0.00	\$0.00	\$0.00	\$0.00	\$0.00
0245T	\$0.00	\$0.00	\$0.00	\$0.00	\$0.00	\$0.00
0246T	\$0.00	\$0.00	\$0.00	\$0.00	\$0.00	\$0.00
0247T	\$0.00	\$0.00	\$0.00	\$0.00	\$0.00	\$0.00
0248T	\$0.00	\$0.00	\$0.00	\$0.00	\$0.00	\$0.00
0249T	\$0.00	\$0.00	\$0.00	\$0.00	\$0.00	\$0.00
0250T	\$0.00	\$0.00	\$0.00	\$0.00	\$0.00	\$0.00
0251T	\$0.00	\$0.00	\$0.00	\$0.00	\$0.00	\$0.00
0252T	\$0.00	\$0.00	\$0.00	\$0.00	\$0.00	\$0.00
0253T	\$0.00	\$0.00	\$0.00	\$0.00	\$0.00	\$0.00
0254T	\$0.00	\$0.00	\$0.00	\$0.00	\$0.00	\$0.00
0255T	\$0.00	\$0.00	\$0.00	\$0.00	\$0.00	\$0.00
0256T	\$0.00	\$0.00	\$0.00	\$0.00	\$0.00	\$0.00
0257T	\$0.00	\$0.00	\$0.00	\$0.00	\$0.00	\$0.00
0258T	\$0.00	\$0.00	\$0.00	\$0.00	\$0.00	\$0.00
0259T	\$0.00	\$0.00	\$0.00	\$0.00	\$0.00	\$0.00
0260T	\$0.00	\$0.00	\$0.00	\$0.00	\$0.00	\$0.00
0261T	\$0.00	\$0.00	\$0.00	\$0.00	\$0.00	\$0.00
A4566	BR	\$0.00	\$0.00	\$0.00	\$0.00	\$0.00
A7020	BR	\$0.00	\$0.00	\$0.00	\$0.00	\$0.00
A9273	BR	\$0.00	\$0.00	\$0.00	\$0.00	\$0.00
C9274	BR	\$0.00	\$0.00	\$0.00	\$0.00	\$0.00
C9275	BR	\$0.00	\$0.00	\$0.00	\$0.00	\$0.00
C9276	BR	\$0.00	\$0.00	\$0.00	\$0.00	\$0.00

fee schedule additions (continued from page 17)

CPT / HCPCS Code	Total / Purchase	Professional / Rental	Technical / Used	Total SOS / Purchase	Prof SOS / Rental	Tech SOS / Used
C9277	BR	\$0.00	\$0.00	\$0.00	\$0.00	\$0.00
C9278	BR	\$0.00	\$0.00	\$0.00	\$0.00	\$0.00
C9279	BR	\$0.00	\$0.00	\$0.00	\$0.00	\$0.00
E0446	BR	\$0.00	\$0.00	\$0.00	\$0.00	\$0.00
E1831	BR	\$0.00	\$0.00	\$0.00	\$0.00	\$0.00
E2622	\$299.68	\$0.00	\$0.00	\$0.00	\$0.00	\$0.00
E2623	\$381.33	\$0.00	\$0.00	\$0.00	\$0.00	\$0.00
E2624	\$302.14	\$0.00	\$0.00	\$0.00	\$0.00	\$0.00
E2625	\$382.49	\$0.00	\$0.00	\$0.00	\$0.00	\$0.00
G0157	BR	\$0.00	\$0.00	\$0.00	\$0.00	\$0.00
G0158	BR	\$0.00	\$0.00	\$0.00	\$0.00	\$0.00
G0159	BR	\$0.00	\$0.00	\$0.00	\$0.00	\$0.00
G0160	BR	\$0.00	\$0.00	\$0.00	\$0.00	\$0.00
G0161	BR	\$0.00	\$0.00	\$0.00	\$0.00	\$0.00
G0162	BR	\$0.00	\$0.00	\$0.00	\$0.00	\$0.00
G0163	BR	\$0.00	\$0.00	\$0.00	\$0.00	\$0.00
G0164	BR	\$0.00	\$0.00	\$0.00	\$0.00	\$0.00
G0434	\$30.71	\$2.15	\$28.56	\$0.00	\$2.15	\$0.00
G0434	\$20.47	\$0.00	\$0.00	\$0.00	\$0.00	\$0.00
G0436	\$17.23	\$0.00	\$0.00	\$14.94	\$0.00	\$0.00
G0436	BR	\$0.00	\$0.00	\$0.00	\$0.00	\$0.00
G0437	\$34.93	\$0.00	\$0.00	\$32.64	\$0.00	\$0.00
G0437	BR	\$0.00	\$0.00	\$0.00	\$0.00	\$0.00
G0438	\$196.77	\$0.00	\$0.00	\$0.00	\$0.00	\$0.00
G0438	BR	\$0.00	\$0.00	\$0.00	\$0.00	\$0.00
G0439	\$130.60	\$0.00	\$0.00	\$0.00	\$0.00	\$0.00
G0439	BR	\$0.00	\$0.00	\$0.00	\$0.00	\$0.00
G0440	\$279.92	\$0.00	\$0.00	\$194.59	\$0.00	\$0.00
G0440	BR	\$0.00	\$0.00	\$0.00	\$0.00	\$0.00
G0441	\$73.86	\$0.00	\$0.00	\$42.73	\$0.00	\$0.00
G0441	BR	\$0.00	\$0.00	\$0.00	\$0.00	\$0.00
G8629	\$0.00	\$0.00	\$0.00	\$0.00	\$0.00	\$0.00
G8630	\$0.00	\$0.00	\$0.00	\$0.00	\$0.00	\$0.00
G8631	\$0.00	\$0.00	\$0.00	\$0.00	\$0.00	\$0.00
G8632	\$0.00	\$0.00	\$0.00	\$0.00	\$0.00	\$0.00

CPT / HCPCS Code	Total / Purchase	Professional / Rental	Technical / Used	Total SOS / Purchase	Prof SOS / Rental	Tech SOS / Used
G8633	\$0.00	\$0.00	\$0.00	\$0.00	\$0.00	\$0.00
G8634	\$0.00	\$0.00	\$0.00	\$0.00	\$0.00	\$0.00
G8635	\$0.00	\$0.00	\$0.00	\$0.00	\$0.00	\$0.00
G8636	\$0.00	\$0.00	\$0.00	\$0.00	\$0.00	\$0.00
G8637	\$0.00	\$0.00	\$0.00	\$0.00	\$0.00	\$0.00
G8638	\$0.00	\$0.00	\$0.00	\$0.00	\$0.00	\$0.00
G8639	\$0.00	\$0.00	\$0.00	\$0.00	\$0.00	\$0.00
G8640	\$0.00	\$0.00	\$0.00	\$0.00	\$0.00	\$0.00
G8641	\$0.00	\$0.00	\$0.00	\$0.00	\$0.00	\$0.00
G8642	\$0.00	\$0.00	\$0.00	\$0.00	\$0.00	\$0.00
G8643	\$0.00	\$0.00	\$0.00	\$0.00	\$0.00	\$0.00
G8644	\$0.00	\$0.00	\$0.00	\$0.00	\$0.00	\$0.00
G8645	\$0.00	\$0.00	\$0.00	\$0.00	\$0.00	\$0.00
G8646	\$0.00	\$0.00	\$0.00	\$0.00	\$0.00	\$0.00
G8647	\$0.00	\$0.00	\$0.00	\$0.00	\$0.00	\$0.00
G8648	\$0.00	\$0.00	\$0.00	\$0.00	\$0.00	\$0.00
G8649	\$0.00	\$0.00	\$0.00	\$0.00	\$0.00	\$0.00
G8650	\$0.00	\$0.00	\$0.00	\$0.00	\$0.00	\$0.00
G8651	\$0.00	\$0.00	\$0.00	\$0.00	\$0.00	\$0.00
G8652	\$0.00	\$0.00	\$0.00	\$0.00	\$0.00	\$0.00
G8653	\$0.00	\$0.00	\$0.00	\$0.00	\$0.00	\$0.00
G8654	\$0.00	\$0.00	\$0.00	\$0.00	\$0.00	\$0.00
G8655	\$0.00	\$0.00	\$0.00	\$0.00	\$0.00	\$0.00
G8656	\$0.00	\$0.00	\$0.00	\$0.00	\$0.00	\$0.00
G8657	\$0.00	\$0.00	\$0.00	\$0.00	\$0.00	\$0.00
G8658	\$0.00	\$0.00	\$0.00	\$0.00	\$0.00	\$0.00
G8659	\$0.00	\$0.00	\$0.00	\$0.00	\$0.00	\$0.00
G8660	\$0.00	\$0.00	\$0.00	\$0.00	\$0.00	\$0.00
G8661	\$0.00	\$0.00	\$0.00	\$0.00	\$0.00	\$0.00
G8662	\$0.00	\$0.00	\$0.00	\$0.00	\$0.00	\$0.00
G8663	\$0.00	\$0.00	\$0.00	\$0.00	\$0.00	\$0.00
G8664	\$0.00	\$0.00	\$0.00	\$0.00	\$0.00	\$0.00
G8665	\$0.00	\$0.00	\$0.00	\$0.00	\$0.00	\$0.00
G8666	\$0.00	\$0.00	\$0.00	\$0.00	\$0.00	\$0.00
G8667	\$0.00	\$0.00	\$0.00	\$0.00	\$0.00	\$0.00
G8668	\$0.00	\$0.00	\$0.00	\$0.00	\$0.00	\$0.00

fee schedule additions (continued from page 19)

CPT / HCPCS Code	Total / Purchase	Professional / Rental	Technical / Used	Total SOS / Purchase	Prof SOS / Rental	Tech SOS / Used
G8669	\$0.00	\$0.00	\$0.00	\$0.00	\$0.00	\$0.00
G8670	\$0.00	\$0.00	\$0.00	\$0.00	\$0.00	\$0.00
G8671	\$0.00	\$0.00	\$0.00	\$0.00	\$0.00	\$0.00
G8672	\$0.00	\$0.00	\$0.00	\$0.00	\$0.00	\$0.00
G8673	\$0.00	\$0.00	\$0.00	\$0.00	\$0.00	\$0.00
G8674	\$0.00	\$0.00	\$0.00	\$0.00	\$0.00	\$0.00
G8675	\$0.00	\$0.00	\$0.00	\$0.00	\$0.00	\$0.00
G8676	\$0.00	\$0.00	\$0.00	\$0.00	\$0.00	\$0.00
G8677	\$0.00	\$0.00	\$0.00	\$0.00	\$0.00	\$0.00
G8678	\$0.00	\$0.00	\$0.00	\$0.00	\$0.00	\$0.00
G8679	\$0.00	\$0.00	\$0.00	\$0.00	\$0.00	\$0.00
G8680	\$0.00	\$0.00	\$0.00	\$0.00	\$0.00	\$0.00
G8681	\$0.00	\$0.00	\$0.00	\$0.00	\$0.00	\$0.00
G8682	\$0.00	\$0.00	\$0.00	\$0.00	\$0.00	\$0.00
G8683	\$0.00	\$0.00	\$0.00	\$0.00	\$0.00	\$0.00
G8684	\$0.00	\$0.00	\$0.00	\$0.00	\$0.00	\$0.00
G8685	\$0.00	\$0.00	\$0.00	\$0.00	\$0.00	\$0.00
G8686	\$0.00	\$0.00	\$0.00	\$0.00	\$0.00	\$0.00
G8687	\$0.00	\$0.00	\$0.00	\$0.00	\$0.00	\$0.00
G8688	\$0.00	\$0.00	\$0.00	\$0.00	\$0.00	\$0.00
G8689	\$0.00	\$0.00	\$0.00	\$0.00	\$0.00	\$0.00
G8690	\$0.00	\$0.00	\$0.00	\$0.00	\$0.00	\$0.00
G8691	\$0.00	\$0.00	\$0.00	\$0.00	\$0.00	\$0.00
G8692	\$0.00	\$0.00	\$0.00	\$0.00	\$0.00	\$0.00
G8693	\$0.00	\$0.00	\$0.00	\$0.00	\$0.00	\$0.00
J0171	BR	\$0.00	\$0.00	\$0.00	\$0.00	\$0.00
J0558	BR	\$0.00	\$0.00	\$0.00	\$0.00	\$0.00
J0561	BR	\$0.00	\$0.00	\$0.00	\$0.00	\$0.00
J0597	\$44.46	\$0.00	\$0.00	\$0.00	\$0.00	\$0.00
J0638	\$87.96	\$0.00	\$0.00	\$0.00	\$0.00	\$0.00
J0775	\$36.11	\$0.00	\$0.00	\$0.00	\$0.00	\$0.00
J1290	\$265.00	\$0.00	\$0.00	\$0.00	\$0.00	\$0.00
J1559	\$25.20	\$0.00	\$0.00	\$0.00	\$0.00	\$0.00
J1599	\$37.58	\$0.00	\$0.00	\$0.00	\$0.00	\$0.00
J1786	\$43.70	\$0.00	\$0.00	\$0.00	\$0.00	\$0.00

CPT / HCPCS Code	Total / Purchase	Professional / Rental	Technical / Used	Total SOS / Purchase	Prof SOS / Rental	Tech SOS / Used
J1826	\$681.00	\$0.00	\$0.00	\$0.00	\$0.00	\$0.00
J2358	\$2.97	\$0.00	\$0.00	\$0.00	\$0.00	\$0.00
J2426	\$6.33	\$0.00	\$0.00	\$0.00	\$0.00	\$0.00
J3095	BR	\$0.00	\$0.00	\$0.00	\$0.00	\$0.00
J3262	\$33.20	\$0.00	\$0.00	\$0.00	\$0.00	\$0.00
J3357	\$108.70	\$0.00	\$0.00	\$0.00	\$0.00	\$0.00
J3385	\$337.50	\$0.00	\$0.00	\$0.00	\$0.00	\$0.00
J7184	\$115.00	\$0.00	\$0.00	\$0.00	\$0.00	\$0.00
J7196	BR	\$0.00	\$0.00	\$0.00	\$0.00	\$0.00
J7309	BR	\$0.00	\$0.00	\$0.00	\$0.00	\$0.00
J7312	BR	\$0.00	\$0.00	\$0.00	\$0.00	\$0.00
J7335	BR	\$0.00	\$0.00	\$0.00	\$0.00	\$0.00
J7686	BR	\$0.00	\$0.00	\$0.00	\$0.00	\$0.00
J8562	BR	\$0.00	\$0.00	\$0.00	\$0.00	\$0.00
J9302	\$44.00	\$0.00	\$0.00	\$0.00	\$0.00	\$0.00
J9307	\$156.25	\$0.00	\$0.00	\$0.00	\$0.00	\$0.00
J9315	\$211.11	\$0.00	\$0.00	\$0.00	\$0.00	\$0.00
J9351	\$28.36	\$0.00	\$0.00	\$0.00	\$0.00	\$0.00
L3674	\$978.27	\$0.00	\$0.00	\$0.00	\$0.00	\$0.00
L4631	\$1,345.12	\$0.00	\$0.00	\$0.00	\$0.00	\$0.00
L5961	BR	\$0.00	\$0.00	\$0.00	\$0.00	\$0.00
L8693	\$1,381.61	\$0.00	\$0.00	\$0.00	\$0.00	\$0.00
Q0478	\$167.44	\$0.00	\$0.00	\$0.00	\$0.00	\$0.00
Q0479	\$11,004.58	\$0.00	\$0.00	\$0.00	\$0.00	\$0.00
Q2035	BR	\$0.00	\$0.00	\$0.00	\$0.00	\$0.00
Q2036	\$21.92	\$0.00	\$0.00	\$0.00	\$0.00	\$0.00
Q2037	\$13.25	\$0.00	\$0.00	\$0.00	\$0.00	\$0.00
Q2038	\$14.74	\$0.00	\$0.00	\$0.00	\$0.00	\$0.00
Q2039	\$13.25	\$0.00	\$0.00	\$0.00	\$0.00	\$0.00
Q4117	BR	\$0.00	\$0.00	\$0.00	\$0.00	\$0.00
Q4118	BR	\$0.00	\$0.00	\$0.00	\$0.00	\$0.00
Q4119	BR	\$0.00	\$0.00	\$0.00	\$0.00	\$0.00
Q4120	BR	\$0.00	\$0.00	\$0.00	\$0.00	\$0.00
Q4121	BR	\$0.00	\$0.00	\$0.00	\$0.00	\$0.00
T1505	\$0.00	\$0.00	\$0.00	\$0.00	\$0.00	\$0.00

Fee Schedule

injection code updates

The following injection codes were updated on the Arkansas Blue Cross and Blue Shield fee schedule.

Code	Allowance
90371	\$121.02
90375	\$167.21
90376	\$163.89
90385	\$25.61
90585	\$119.06
90586	\$118.14
90632	\$52.84
90655	\$15.45
90675	\$202.12
90691	\$62.33
90703	\$28.68
90714	\$19.48
90715	\$41.95
90718	\$24.57
A9576	\$2.38
A9577	\$2.57
A9578	\$2.37
A9579	\$2.31
A9583	\$13.31
J0129	\$21.25
J0130	\$544.52

Code	Allowance
J0132	\$2.84
J0135	\$401.71
J0150	\$10.06
J0152	\$91.37
J0171	\$0.04
J0180	\$141.66
J0205	\$43.67
J0207	\$334.15
J0210	\$41.81
J0215	\$36.78
J0220	\$165.12
J0256	\$3.95
J0270	\$0.39
J0275	\$26.75
J0278	\$0.81
J0282	\$0.28
J0285	\$12.92
J0287	\$9.98
J0288	\$14.56
J0289	\$15.62
J0290	\$3.11

Code	Allowance
J0295	\$2.63
J0330	\$0.16
J0348	\$1.31
J0360	\$4.50
J0364	\$4.97
J0400	\$0.39
J0456	\$4.83
J0470	\$28.66
J0475	\$213.52
J0476	\$76.18
J0480	\$2,133.89
J0500	\$22.18
J0515	\$62.98
J0558	\$3.35
J0561	\$4.23
J0585	\$5.70
J0586	\$7.87
J0587	\$10.75
J0592	\$0.75
J0595	\$0.96
J0597	\$28.63

Code	Allowance
J0630	\$54.04
J0637	\$12.72
J0641	\$1.31
J0670	\$2.17
J0690	\$0.60
J0692	\$2.18
J0694	\$7.78
J0697	\$2.49
J0698	\$5.27
J0702	\$6.36
J0713	\$2.16
J0718	\$4.06
J0725	\$9.87
J0735	\$20.56
J0740	\$788.69
J0744	\$1.20
J0745	\$1.40
J0770	\$18.09
J0775	\$39.01
J0780	\$1.98
J0795	\$5.36
J0833	\$54.40
J0834	\$79.48
J0881	\$3.08
J0882	\$3.08
J0885	\$10.06

Code	Allowance
J0886	\$10.06
J0894	\$32.53
J0895	\$13.45
J1020	\$1.42
J1030	\$2.90
J1040	\$7.35
J1051	\$8.50
J1070	\$4.17
J1080	\$5.44
J1100	\$0.09
J1110	\$23.43
J1120	\$31.00
J1160	\$1.09
J1162	\$533.10
J1165	\$0.79
J1190	\$231.39
J1200	\$0.82
J1205	\$465.78
J1212	\$74.39
J1230	\$6.47
J1245	\$1.18
J1250	\$6.26
J1260	\$4.40
J1265	\$0.50
J1270	\$3.25
J1290	\$286.29

Code	Allowance
J1325	\$15.11
J1327	\$20.98
J1335	\$29.39
J1364	\$9.92
J1380	\$7.92
J1410	\$101.59
J1438	\$207.27
J1440	\$249.51
J1441	\$392.41
J1450	\$5.16
J1451	\$7.75
J1453	\$1.80
J1455	\$11.35
J1458	\$351.93
J1460	\$19.42
J1559	\$7.58
J1560	\$194.21
J1561	\$39.14
J1562	\$7.54
J1566	\$32.53
J1568	\$37.48
J1569	\$40.11
J1570	\$60.15
J1571	\$62.50
J1572	\$37.17
J1573	\$62.50

injection code updates (continued from page 23)

Code	Allowance
J1580	\$1.08
J1600	\$14.37
J1610	\$101.27
J1626	\$0.68
J1630	\$6.17
J1631	\$48.83
J1644	\$0.36
J1645	\$12.41
J1650	\$7.11
J1652	\$6.37
J1655	\$4.67
J1670	\$241.77
J1720	\$3.76
J1740	\$152.37
J1742	\$185.49
J1745	\$63.00
J1750	\$12.17
J1756	\$0.37
J1786	\$43.67
J1790	\$3.38
J1800	\$2.87
J1815	\$0.48
J1817	\$2.44
J1885	\$0.30
J1930	\$31.62

Code	Allowance
J1940	\$0.60
J1945	\$317.38
J1950	\$574.93
J1953	\$0.61
J1955	\$4.96
J1956	\$5.58
J1980	\$12.31
J2010	\$5.89
J2020	\$35.25
J2060	\$0.74
J2150	\$0.98
J2175	\$1.82
J2185	\$3.55
J2210	\$5.95
J2248	\$1.07
J2250	\$0.07
J2260	\$4.41
J2270	\$2.04
J2271	\$1.08
J2275	\$2.98
J2280	\$3.12
J2300	\$1.05
J2310	\$7.25
J2315	\$2.50
J2323	\$10.62

Code	Allowance
J2325	\$45.81
J2353	\$119.29
J2354	\$1.36
J2355	\$254.58
J2357	\$21.25
J2358	\$2.86
J2360	\$5.87
J2370	\$1.05
J2400	\$13.22
J2410	\$2.39
J2425	\$11.78
J2426	\$6.76
J2430	\$15.36
J2440	\$0.79
J2469	\$19.63
J2501	\$3.45
J2503	\$1,064.81
J2505	\$2,645.53
J2510	\$11.94
J2515	\$18.66
J2540	\$0.73
J2543	\$5.77
J2550	\$2.12
J2560	\$3.17
J2562	\$291.21

Code	Allowance
J2597	\$5.33
J2675	\$1.56
J2690	\$7.17
J2700	\$2.21
J2720	\$0.46
J2724	\$13.14
J2730	\$94.02
J2760	\$58.43
J2765	\$0.38
J2770	\$166.63
J2778	\$421.86
J2780	\$0.99
J2783	\$190.12
J2785	\$53.77
J2788	\$26.35
J2790	\$89.03
J2792	\$21.87
J2796	\$46.98
J2800	\$29.63
J2805	\$75.44
J2820	\$24.76
J2916	\$5.19
J2920	\$1.86
J2930	\$2.63
J2993	\$1,514.90
J2997	\$41.24

Code	Allowance
J3000	\$10.08
J3010	\$0.43
J3030	\$44.64
J3070	\$9.62
J3095	\$2.01
J3101	\$53.55
J3105	\$1.62
J3120	\$4.29
J3130	\$10.00
J3230	\$9.30
J3240	\$1,095.14
J3246	\$8.58
J3250	\$4.71
J3260	\$2.93
J3262	\$3.61
J3285	\$63.69
J3300	\$3.36
J3301	\$1.69
J3303	\$1.42
J3315	\$183.32
J3355	\$68.05
J3360	\$1.19
J3370	\$3.12
J3396	\$10.03
J3410	\$1.43
J3411	\$5.49

Code	Allowance
J3420	\$0.29
J3430	\$1.78
J3465	\$6.25
J3471	\$0.18
J3473	\$0.66
J3486	\$7.12
J3487	\$231.73
J3488	\$231.58
J7030	\$0.48
J7060	\$1.16
J7100	\$21.24
J7120	\$1.08
J7184	\$72.99
J7185	\$1.12
J7187	\$0.93
J7189	\$1.49
J7192	\$1.15
J7193	\$0.94
J7194	\$0.91
J7195	\$1.20
J7197	\$2.62
J7198	\$1.66
J7308	\$147.47
J7311	\$20,118.80
J7312	\$203.82
J7321	\$94.40

injection code updates (continued from page 25)

Code	Allowance
J7323	\$154.47
J7324	\$175.80
J7325	\$12.40
J7335	\$26.58
J7500	\$0.15
J7501	\$110.99
J7502	\$3.32
J7504	\$552.10
J7505	\$1,178.49
J7506	\$0.05
J7507	\$3.24
J7511	\$424.61
J7515	\$0.86
J7516	\$23.30
J7517	\$1.45
J7525	\$144.95
J7605	\$5.53
J7606	\$4.82
J7608	\$2.04
J7612	\$0.17
J7620	\$0.18
J7626	\$5.12
J7631	\$0.53
J7639	\$27.20
J7644	\$0.27

Code	Allowance
J7682	\$78.16
J7686	\$414.26
J8501	\$6.23
J8510	\$3.80
J8520	\$7.18
J8521	\$23.64
J8530	\$0.89
J8560	\$31.29
J8562	\$82.71
J8600	\$4.98
J8700	\$9.66
J8705	\$80.20
J9000	\$4.22
J9001	\$533.63
J9010	\$610.28
J9015	\$954.79
J9017	\$39.56
J9020	\$65.77
J9025	\$5.33
J9027	\$121.01
J9031	\$118.14
J9033	\$19.31
J9035	\$62.05
J9040	\$15.93
J9041	\$41.97

Code	Allowance
J9045	\$3.69
J9050	\$182.94
J9060	\$1.65
J9065	\$24.70
J9070	\$7.84
J9098	\$503.36
J9100	\$1.34
J9120	\$583.90
J9130	\$3.45
J9150	\$18.47
J9155	\$2.73
J9160	\$1,648.10
J9171	\$19.17
J9178	\$1.69
J9181	\$0.65
J9185	\$96.13
J9200	\$39.09
J9201	\$157.83
J9202	\$210.44
J9206	\$7.95
J9208	\$36.71
J9209	\$5.28
J9211	\$149.16
J9214	\$16.69
J9217	\$217.47

Code	Allowance
J9218	\$5.55
J9225	\$1,421.78
J9226	\$14,927.96
J9230	\$160.29
J9245	\$1,400.39
J9250	\$0.21
J9260	\$2.09
J9261	\$113.75
J9263	\$9.51
J9264	\$9.75
J9265	\$7.59
J9266	\$2,658.56
J9268	\$1,189.58
J9280	\$22.60
J9293	\$42.86
J9300	\$2,795.25
J9302	\$47.20
J9303	\$90.82
J9305	\$54.43
J9310	\$618.41
J9320	\$285.57
J9340	\$118.83
J9351	\$28.45
J9355	\$71.10
J9360	\$0.95
J9370	\$4.03

Code	Allowance
J9390	\$13.64
J9395	\$86.26
J9600	\$3,203.99
P9041	\$10.19
P9045	\$50.97
P9046	\$21.00
P9047	\$52.51
Q0138	\$0.76
Q0139	\$0.76
Q0164	\$0.04
Q0165	\$0.04
Q0166	\$0.81
Q0167	\$7.33
Q0168	\$14.73
Q0169	\$0.43
Q0170	\$0.02
Q0173	\$0.86
Q0175	\$0.46
Q0176	\$0.50
Q0177	\$0.04
Q0178	\$0.05
Q0179	\$1.12
Q0180	\$67.49
Q2009	\$0.73
Q2017	\$335.68
Q2036	\$7.74

Code	Allowance
Q2037	\$13.78
Q2038	\$13.10
Q3025	\$230.92
Q4074	\$68.35
Q4101	\$36.14
Q4102	\$4.81
Q4103	\$4.81
Q4104	\$15.83
Q4105	\$10.77
Q4106	\$41.81
Q4107	\$95.77
Q4108	\$20.52
Q4110	\$36.20
Q4111	\$7.39
Q4112	\$351.43
Q4113	\$351.43
Q4114	\$1,051.32
Q4115	\$7.17
Q4116	\$33.84
Q9954	\$11.13
Q9956	\$43.53
Q9957	\$65.29
Q9960	\$0.16
Q9961	\$0.17
Q9965	\$1.22
Q9966	\$0.33

Arkansas Blue Cross and Blue Shield
P. O. Box 2181
Little Rock, AR 72203

PRSR STD
U.S. POSTAGE
PAID
LITTLE ROCK, AR
PERMIT #1913

providers' news staff

Providers' News is published quarterly for providers and their office staffs by Arkansas Blue Cross and Blue Shield.

Editor: Karen Green, 501-378-6628 FAX 501-378-2465, ProvidersNews@arkbluecross.com

Please Note

Providers' News contains information pertaining to Arkansas Blue Cross and Blue Shield and its affiliated companies. The newsletter does not pertain to Medicare. Medicare policies are outlined in the Medicare Providers' News bulletins. If you have any questions, please feel free to call (501) 378-2307 or (800) 827-4814.

Any five-digit Physician's Current Procedural Terminology (CPT) codes, descriptions, numeric modifiers, instructions, guidelines, and other material are copyright 2010 American Medical Association. All Rights Reserved.

We're on the Web!
ArkansasBlueCross.com
HealthAdvantage-hmo.com
BlueAdvantageArkansas.com
and fepblue.org



**Arkansas
BlueCross BlueShield**
An Independent Licensee of the Blue Cross and Blue Shield Association